

CYPRESS LAKES PLAT NO 10, A P. U. D.

A PLANNED UNIT DEVELOPMENT IN CYPRESS LAKES
SECTION 14, TOWNSHIP 43 SOUTH, RANGE 42 EAST

PALM BEACH COUNTY, FLORIDA

IN 3 SHEETS SHEET NO. 2

1989

PLAT OF SUBDIVISION OF SECTION 11
PB. 20 PG. 53

PLAT OF SUBDIVISION OF SECTION 11
PB. 20 PG. 53

STATE OF FLORIDA
COUNTY OF PALM BEACH
This Plat was filed for record at
this day of
19 and duly recorded in plat book
on page
JOHN B. DUNKLE, Clerk of Circuit Court
BY _____ D. G.

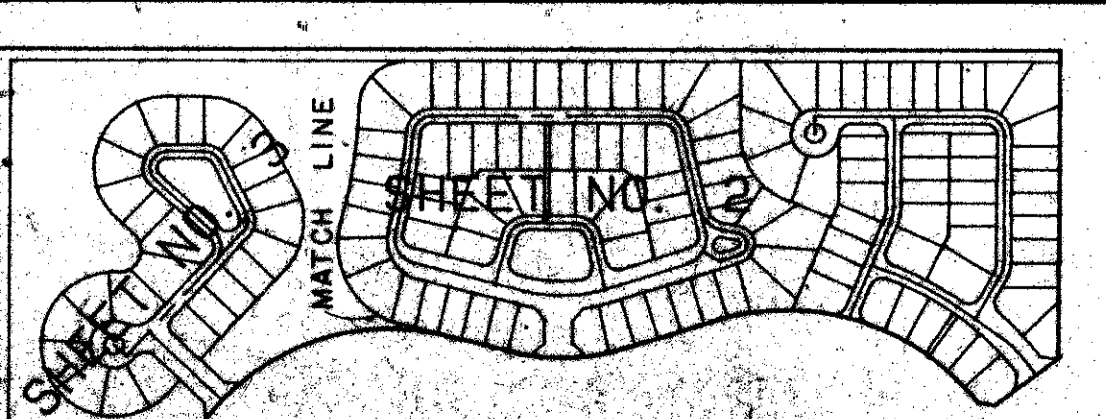
8

0234-007



SUBDIVISION: Cypress Lakes Plat No. 10
 BOOK: 64
 PAGE: 30
 FILED: 10/30/89
 PLANNED UNIT DEVELOPMENT
 PLAT NO. 10
 SHEET NO. 2
 0234-007

ADD. BY: [Signature]
 CHECKED BY: [Signature]



LEGEND:
 U.E. INDICATES UTILITY EASEMENT
 D.E. INDICATES DRAINAGE EASEMENT
 L.A.E. INDICATES LIMITED ACCESS EASEMENT
 Δ INDICATES ZERO LOT LINE (HOUSE SIDE)

CYPRESS LAKES PLAT NO. 8
 P.B. 49 PGS. 58 & 59

CYPRESS LAKES PLAT NO. 151
 P.B. 37 PGS. 148 THRU 151

F. R. S. & ASSOCIATES
 ENGINEERS, LAND SURVEYORS, LAND PLANNERS
 WEST PALM BEACH, FLORIDA
 SCALE: 1"=50'
 APPROVED BY: [Signature]
 PLOTTED BY: [Signature]
 A PLANNED UNIT DEVELOPMENT
 IN CYPRESS LAKES, PLAT NO. 10
 Sheet 2 of 3 sheets

64/8

0234-007